

CorelDRAW 10 Graphics Suite



by Jack and Sue Drafaht

3 great graphics applications in one box

Corel Corporation's flagship software, CorelDRAW, quickly made a name for itself in the PC graphics marketplace when introduced in 1989. Recently, it has been expanded to include a suite of three powerful graphics applications and supporting utilities, all in one box. This new version, called CorelDRAW 10 Graphics Suite, is so diverse that just trying to list its features would take more space than is available here.

The CorelDRAW 10 Suite consists of three main programs designed to provide all the tools necessary for professional print and Web design. When working primarily with vector clipart, text, symbols and illustration tools, CorelDRAW 10 would be the place to start. If you are working primarily with bitmap graphics (e.g., photos), Corel Photo-Paint 10 allows you to quickly open your bitmap images and start editing. Web-page animation is easier now using the new Corel R.A.V.E. program. The best part is that all three programs are interconnected so you can freely move back and forth.

In addition, many key features in the programs overlap. For example, Corel Photo-Paint can import vector clipart as objects that can be easily combined with pre-existing bitmap

files. CorelDRAW can do the reverse by loading bitmap objects in with pre-loaded vector art. You can drag and drop files from one editing screen to the other, make changes, and drag the modified image back into another program. There is no end to this versatility.

The utility programs include Corel Capture, Corel Trace, Corel Texture, Corel Batch Texture, Bitstream Font Navigator, Bar Code Wizard, Duplexing Wizard and the Canto Cumulus 5 File Database. Whew! Each of these utility programs interfaces with the three main programs or can be run independently. If you add up all the pull-down menus and tools, you are looking at several thousand possible editing functions. More than likely, you will never



Left: The scrapbook in Corel-Paint 10 collected drinking glasses from the photo objects directory on the Corel Photo CD. Each was then dragged onto a white background.

use them all, but it is reassuring to know that if you need them, they are ready.

Let's take a closer look at the main applications contained in CorelDRAW 10 Graphics Suite:

CorelDRAW 10

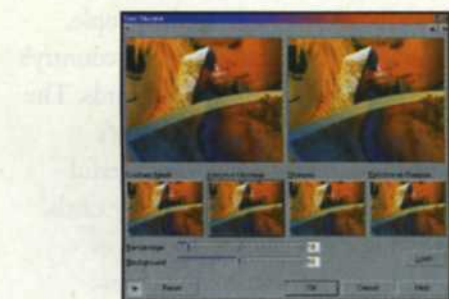
CorelDRAW 10 is one of the most powerful vector editing programs on the market today. The powerful tools included make page layout and illustrations a breeze. The



Above: Vector clipart images are collected in the scrapbook and displayed as thumbnails. Clipart can then be selected from the scrapbook and dragged onto the CorelDRAW 10 edit screen.
Right: The image sprayer brush in Corel-Paint 10 was used to spray assorted butterfly photo objects in this photo.

new RealTime preview makes it even easier because it allows you to look at formats and effects before applying them. This saves time by reducing the need to undo unsatisfactory effects. Vector shapes can be created from scratch using a wide assortment of shape tools that work with both Bezier and freehand curves. The addition of Perfect Shapes allows you to insert the more common shapes, such as stars, arrows and flowchart shapes. You can blend objects, add drop

Right: Corel-Paint 10 offers several menus to correct color and gamma. The upper left image is uncorrected; the upper right image has been corrected using both menus on the lower part of the screen.

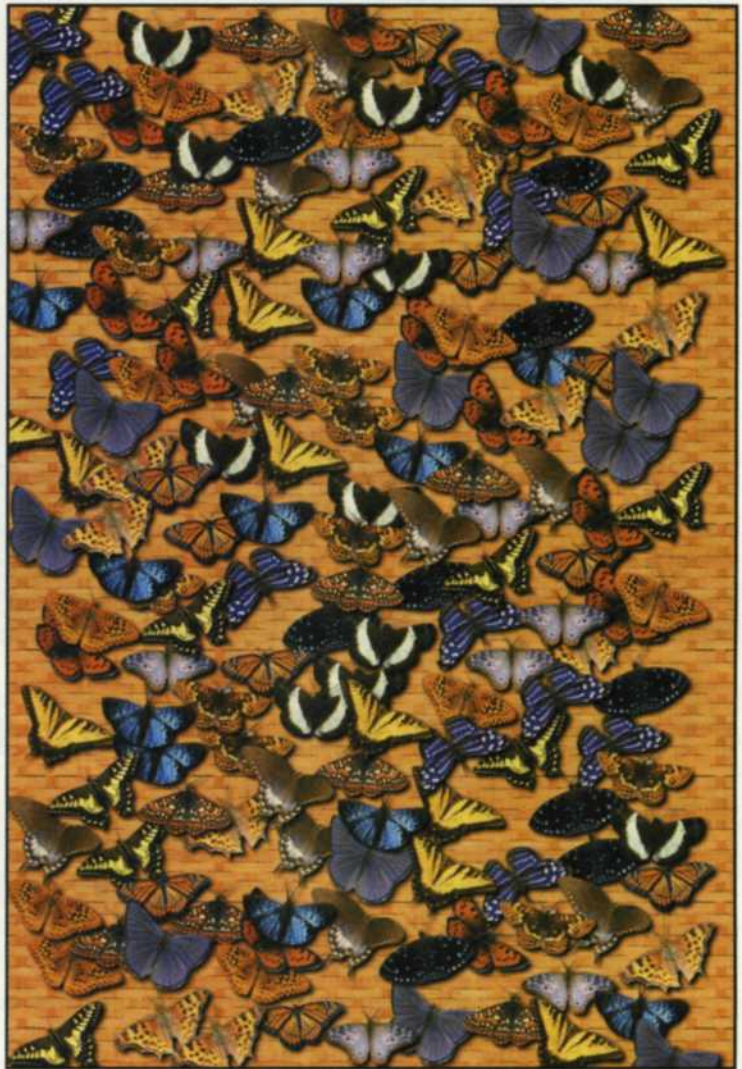


Left: The sharpen filter in Corel-Paint 10 allows you to see before and after images of the various sharpen effects, making it very easy to achieve just the effect you want.

shadows, fill with solid colors or textures, add special effects, and intermix imported bitmap images.

It is easy to drag and drop any of the thousands of clipart images found on the clipart CD. The scrapbook function will display thumbnails of both bitmap and vector files on any storage device attached to your computer. When you find the one you like, simply select the file and drag it onto the image-editing area.

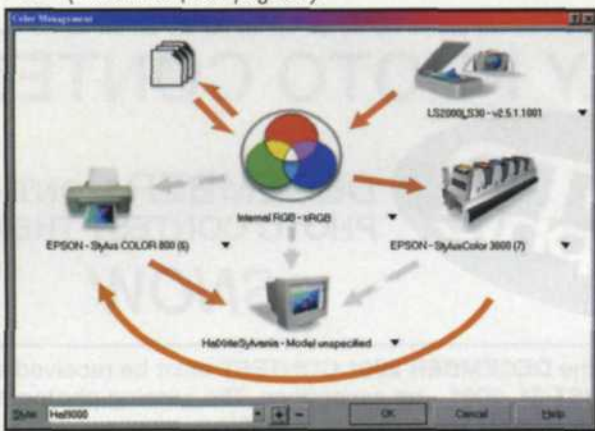
There have been several improvements to the text-



handling portion of the program to make your life easier. Impressive text functions allow the flexibility to warp, shape and fit text to any line in the image. Since more and more people are working in global markets and are required to work in multiple languages, CorelDRAW 10 makes it easy. A new software function allows you to place multiple languages within the same text box.

If you like to work with PDF files, CorelDRAW 10 can add crop marks, calibration bars, file information, registration marks, and even densitometer scales to speed up the editing process. A new Page Sorter enables you to view a collection of thumbnails for all the pages in a document. This makes it easy to organize, delete and manage document pages.

CorelDRAW 10 now supports the popular Macromedia Flash SWF format. This allows you to convert animations and vector graphics for Web use. The program also uses the Docker toolbar concepts to access the hundreds of controls



Above: CorelDRAW 10 provides a full color-management system for controlling the entire edit process.

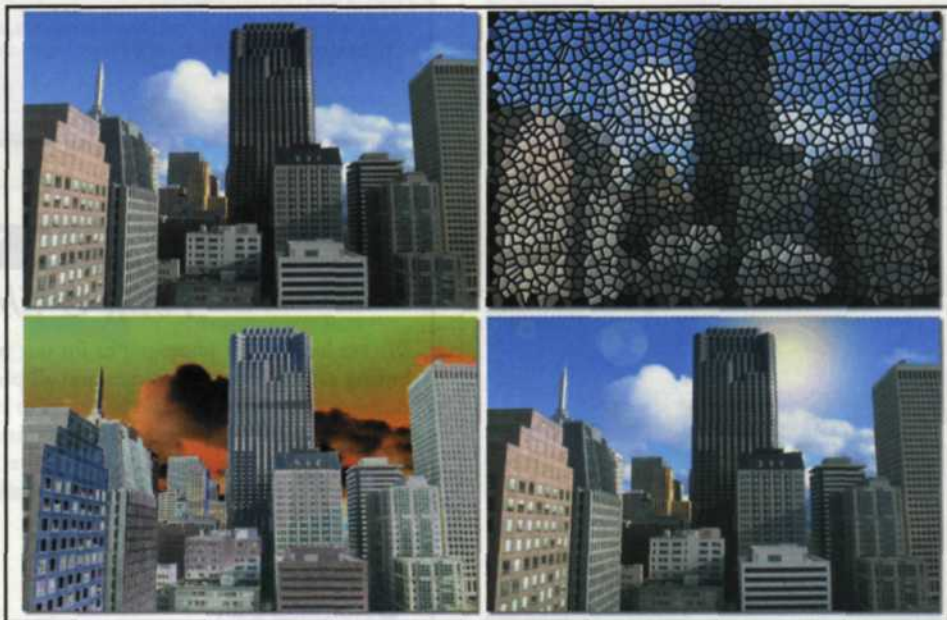
located in the program. When you access any of the tools through these menus, you will immediately be given the name of the tool and a small sample icon indicating the tool's function. To better help you through the learning process, the Corel programs feature both a tutorial and an excellent help database.

Corel-Paint 10

Corel-Paint 10 is a professional bitmap editing program with advanced controls for color management, gamma adjustments, channels and object layering. This is the perfect choice when retouching photos, adding special effects and creating sophisticated text. This program also features the RealTime Preview so you can see your changes before they are applied.

When designing original images, the program presents a wide assortment of brush controls to give you the maximum creative edge which is needed in the competitive digital world today. It even has an image nozzle brush that sprays assorted groups of images, like butterflies, candy, or flowers, onto the base image. The program has a very extensive selection of filter and special effect controls at your fingertips. If that is not enough, you can also import any of the Adobe Photoshop plug-in filters such as KPT 3, 5 and 6 and Eye Candy special effects.

Corel Photo-Paint 10 provides even more editing tools to the photographer. The Red Eye Removal quickly replaces the red-eye in a photo with a user-selected color. Smart Blur



Above: Corel-Paint 10 has hundreds of possible special-effects filters. This group illustrates three. The upper left image is an original Corel Stock image. The upper right image uses the stained glass effect. The lower left image uses the solarize effect, and the lower right image adds lens flare to a reverse mask of the buildings.

Right: The Corel R.A.V.E. edit screen for creating Real Animated Vector Effects graphics for the Web from vector images created in CorelDRAW 10 or totally from scratch. R.A.V.E. includes a Web Image Optimizer with visual comparisons.



allows you to fine-tune your images using just the right amount of blur. The Drop Shadow tool enables you to customize your drop Shadow's features, feathering, opacity and colors. Even the text tools have been enhanced to better match the needs of the ever-expanding Web.

Corel R.A.V.E.

Corel R.A.V.E. is the newest member of the Corel Suite and is designed to help you create Real Animated Vector Effects. It enables you to create Macromedia Flash animations from the vector images created in CorelDRAW 10 or totally from scratch. The program allows audio control, animated rollovers, blends, tweening, and keyframe control. Corel R.A.V.E. also includes a Web Image Optimizer to provide a visual comparison of image compressions, so you can decide before saving to JPEG, GIF or PNG file formats.

If you often work with text documents for books or other publications, you might consider the companion product Corel Word Perfect Office 2002. We tested the two groups of programs together and found them to be very compatible. Vector, bitmap and text selections can be dragged from one program and dropped onto one of the others. Files can be imported into either software group with the exception of

Corel R.A.V.E., which is destined for Web page output.

As mentioned, we just scratched the surface on the multitude of features included in this powerful combination of software programs. Rest assured that no matter what your imaging needs, this suite of Corel 10 programs has evolved to provide the ultimate solutions.

CorelDRAW 10 Graphics Suite is available for Windows 98, Windows 2000, Windows NT or Windows Millennium. The full product sells for \$549.99, \$509.00 for the download version and \$239.99 for the upgrade. A Macintosh version is expected soon. For further information about all the Corel products, log onto the Web at www.corel.com. ■